

Enrollment Comparison Report
Michigan Public Universities
Fall 2005

based on the

Presidents Council
Michigan Public Universities
Enrollment Report

Wayne State University
Office of Institutional Research
3/21/2006

About this Report

Annually, the Presidents Council of the Michigan Public Universities publishes an *Enrollment Report* that overview several principal enrollment measures for its member universities. The measures in the *Enrollment Report* generally omit the calculation of percent, percentage change, or percent of totals, thereby precluding its ready review. This report provides those calculations for the current and prior year enrollment totals. New to this year's report is the addition of 25 charts that provide a convenient overview of trends and changes. Note that Wayne State University is highlighted in the charts by the addition of a distinctive pattern to its corresponding entry.

All the original tables in the Presidents Council enrollment report are included along with two additional tables, Table 1 and Table 2, comprising applications, admissions, and enrollments for a) first-time in any college students, and b) transfer students. This information is drawn from the IPEDS Institutional Characteristics Survey, the Common Data Set, and the Institutional Research Offices of the Michigan Public Universities.

This report may also be found on our offices website: <http://www.oir.wayne.edu>. Inquiries and suggestions may be sent to the Office of Institutional Research via email at ir_requests@oir.wayne.edu.

Table of Contents

Table 1: First-Time Freshmen - Applications, Admittances, and Enrollments	1
Chart 1: FTIAC Applicant & Admits - Percent Change	3
Chart 2: FTIAC Admit to Applicant Rate	3
Chart 3: FTIAC Enrolled to Admit Rate	3
Chart 4: FTIAC Students - Change in Percent of Yield Ratio Admits to Applicants	4
Chart 5: FTIAC Students - Change in Percent of Yield Ratio Enrolled to Admits	4
Table 2: New Transfer Undergraduate Students - Applications, Admittances, and Enrollments	5
Chart 6: Transfer Applicant & Admits - Percent Change	7
Chart 7: Transfer Enrollment	7
Chart 8: Transfer Students - Percent Change of Yield Ratio Applicants to Admits	8
Chart 9: Transfer Students - Percent Change of Yield Ratio Enrolled to Admits	8
Table 3: Total Student Headcount	9
Chart 10: Total Student Headcount - Change in Number of Students	10
Chart 11: Total Student Headcount - Percent Change	10
Table 4: First-time Freshmen Headcount	11
Chart 12: FTIAC Headcount - Change in Number of Students	12
Chart 13: FTIAC Headcount - Percent Change	12
Table 5: Graduate Students Headcount	13
Chart 14: Graduate Headcount - Change in Number of Students	14
Chart 15: Graduate Headcount - Percent Change	14
Table 6: Enrollment by Level	15
Chart 16: Undergraduate Enrollment - Change in Number of Students	18
Chart 17: Undergraduate Enrollment - Percent Change	18
Chart 18: Masters Enrollment - Change in Number of Students	19
Chart 19: Masters Enrollment - Percent Change	19
Chart 20: Doctoral Enrollment - Change in Number of Students	20
Chart 21: Doctoral Enrollment - Percent Change	20
Chart 22: Professional Enrollment - Change in Number of Students	20
Chart 23: Professional Enrollment - Percent Change	20
Table 7: Fiscal Year Equivalent Students	21
Chart 24: Fiscal Year Equivalent Students - Change in Number of Students	22
Chart 25: Fiscal Year Equivalent Students - Percent Change	22

Table 1

**First-time Freshmen
Applications, Admittances, and Enrollments
Fall 2004 and Fall 2005**

Institution Name	Applicants			Admits			Enrolled		
	2004	2005	% Change	2004	2005	% Change	2004	2005	% Change
Central Michigan University ¹	13,593	13,550	-0.3	10,106	10,198	0.9	3,741	3,738	-0.1
Eastern Michigan University ²	8,485	10,151	19.6	6,180	8,041	30.1	2,343	2,386	1.8
Ferris State University ³	11,166	12,877	15.3	5,516	6,021	9.2	1,958	2,417	23.4
Grand Valley State University	11,934	12,546	5.1	9,134	9,594	5.0	3,343	3,386	1.3
Lake Superior State University	1,569	1,557	-0.8	919	1,266	37.8	548	491	-10.4
Michigan State University	21,834	21,844	0.0	17,343	16,686	-3.8	7,607	7,485	-1.6
Michigan Technological University ⁴	3,355	3,928	17.1	2,856	3,326	16.5	1,227	1,327	8.1
Northern Michigan University ²	5,001	4,772	-4.6	4,154	3,995	-3.8	1,939	1,406	-27.5
Oakland University	6,293	6,014	-4.4	5,120	4,930	-3.7	2,053	2,213	7.8
Saginaw Valley State University	3,442	3,796	10.3	3,082	3,392	10.1	1,241	1,267	2.1
University of Michigan - Ann Arbor	21,293	23,882	12.2	13,304	13,610	2.3	6,040	6,115	1.2
University of Michigan - Dearborn	2,554	2,608	2.1	1,766	1,845	4.5	696	840	20.7
University of Michigan - Flint	1,259	1,651	31.1	1,097	1,396	27.3	553	579	4.7
Wayne State University ⁵	7,224	7,947	10.0	6,083	6,854	12.7	3,120	2,879	-7.7
Western Michigan University	14,110	12,928	-8.4	11,994	11,045	-7.9	3,761	3,741	-0.5
Total	119,002	127,123	6.8	86,660	91,154	5.2	36,409	36,529	0.3

Source: IPEDS - Institutional Characteristics Survey

Note: FTIAC enrollment counts in Table 1 may not agree with the FTIAC enrollment counts in Table 3, since Table 1 may not include new fall enrollees initially enrolled in the preceding summer term.

¹Fall 2004 data entered from the Common Data Set; not available in IPEDS.

²Fall 2005 data entered from the Common Data Set; not available in IPEDS.

³Ferris State University Fall 2005 data corrected from IPEDS, per Ferris State University Office of Institutional Research.

⁴Fall 2005 data entered from the Michigan Technological University Office of Institutional Research; not available in IPEDS or the Common Data Set.

⁵Wayne State University data revised for Fall 2004 and 2005 to reflect number of completed applications, per Wayne State University Office of Institutional Research. The total number of applications was 9,680 in fall 2004 and was 11,410 in fall 2005.

Table 1 continued

**First-time Freshmen - Applications, Admittences, and Enrollments
Fall 2004 and Fall 2005**

Institution Name	Admits/Applicants Rate			Enrolled/Admits Rate		
	2004	2005	Change	2004	2005	Change
Central Michigan University	74	75	0.9	37	37	-0.4
Eastern Michigan University	73	79	6.4	38	30	-8.2
Ferris State University	49	47	-2.6	35	40	4.6
Grand Valley State University	77	76	-0.1	37	35	-1.3
Lake Superior State University	59	81	22.7	60	39	-20.8
Michigan State University	79	76	-3.0	44	45	1.0
Michigan Technological University	85	85	-0.5	43	40	-3.1
Northern Michigan University	83	84	0.7	47	35	-11.5
Oakland University	81	82	0.6	40	45	4.8
Saginaw Valley State University	90	89	-0.2	40	37	-2.9
University of Michigan - Ann Arbor	62	57	-5.5	45	45	-0.5
University of Michigan - Dearborn	69	71	1.6	39	46	6.1
University of Michigan - Flint	87	85	-2.6	50	41	-8.9
Wayne State University	84	86	2.0	51	42	-9.3
Western Michigan University	85	85	0.4	31	34	2.5
Total	73	72	-1.1	42	40	-1.9

Source: National Center for Education Statistics (NCES), Integrated Postsecondary Education Data System (IPEDS)

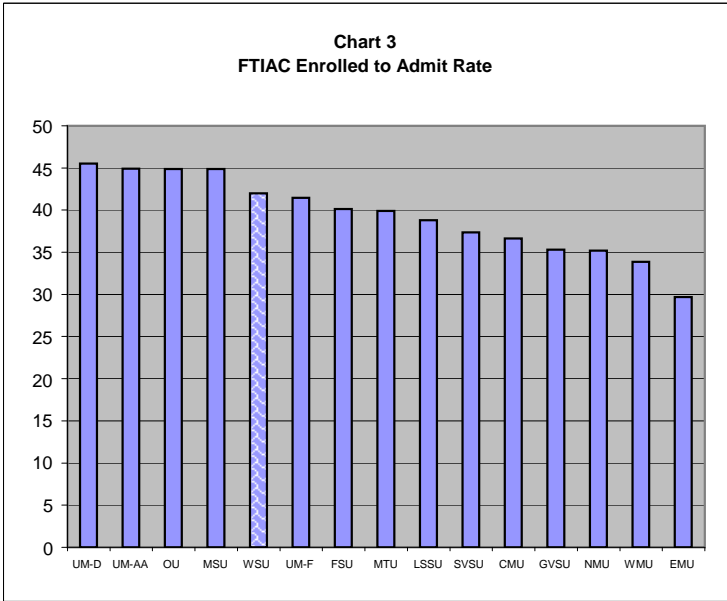
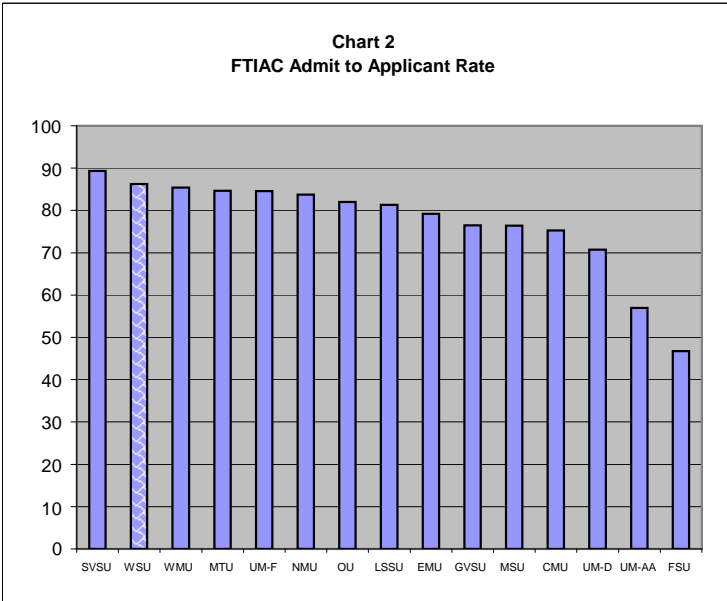
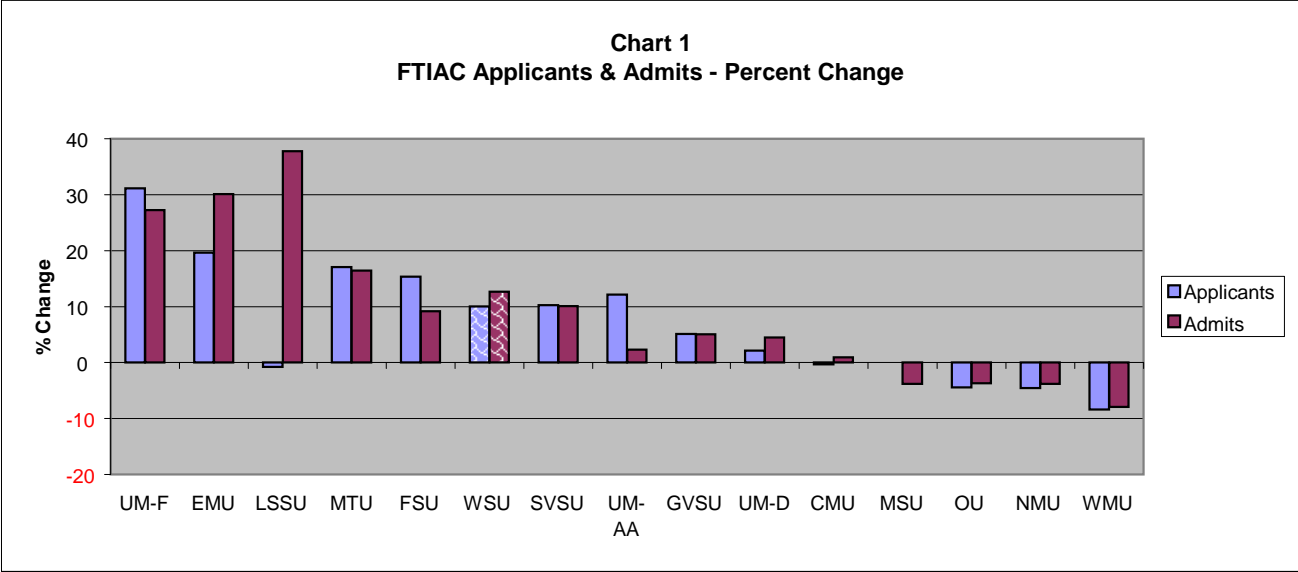
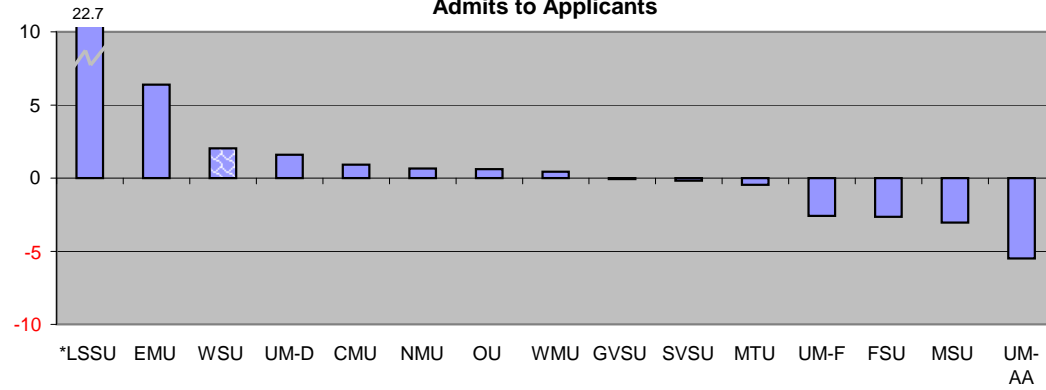


Chart 4
FTIAC Students - Change in Percent of Yield Ratio
Admits to Applicants



*LSSU value of 22.7 is truncated to facilitate viewing of remaining universities. Actual rates are 59 in 2004 and 81 in 2005.

Chart 5
FTIAC Students - Change in Percent of Yield Ratio
Enrollments to Admits

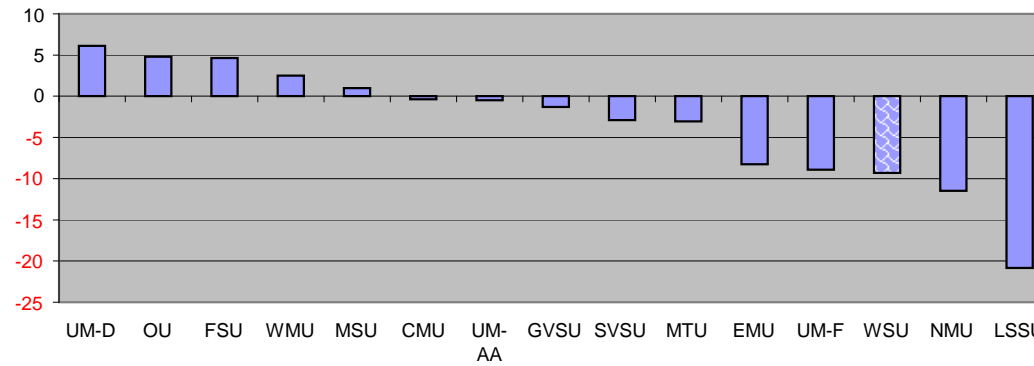


Table 2

**New Transfer Undergraduate Students
Applications, Admittances, and Enrollments
Fall 2004 and Fall 2005**

Institution	Applicants			Admits			Enrolled		
	2004	2005	% Change	2004	2005	% Change	2004	2005	% Change
Central Michigan University	2,054	2,748	33.8	1,496	1,896	26.7	1,101	1,107	0.5
Eastern Michigan University	3,125	3,299	5.6	2,354	2,530	7.5	1,680	1,694	0.8
Ferris State University	3,452	4,199	21.6	2,040	2,233	9.5	1,301	1,381	6.1
Grand Valley State University	2,533	2,521	-0.5	2,343	2,104	-10.2	1,580	1,411	-10.7
Lake Superior State University	595	554	-6.9	439	459	4.6	251	239	-4.8
Michigan State University	4,230	4,225	-0.1	2,402	2,020	-15.9	1,682	1,511	-10.2
Michigan Technological University	327	587	79.5	299	337	12.7	198	213	7.6
Northern Michigan University	1,144	1,127	-1.5	787	752	-4.4	534	514	-3.7
Oakland University	2,343	2,514	7.3	1,771	1,844	4.1	1,285	1,350	5.1
Saginaw Valley State University	1,100	1,092	-0.7	984	951	-3.4	624	631	1.1
University of Michigan - Ann Arbor	2,733	2,898	6.0	1,217	1,296	6.5	831	801	-3.6
University of Michigan - Dearborn	1,482	1,468	-0.9	1,301	1,087	-16.4	638	658	3.1
University of Michigan - Flint	1,340	1,313	-2.0	1,081	1,109	2.6	707	694	-1.8
Wayne State University ¹	3,476	3,607	3.8	3,181	3,377	6.2	2,568	2,752	7.2
Western Michigan University	3,069	3,286	7.1	2,425	2,608	7.5	1,685	1,616	-4.1
Total	29,934	32,152	7.4	21,695	21,995	1.4	14,980	14,956	-0.2

¹Wayne State University data revised for Fall 2004 and 2005 to reflect number of completed applications, per Wayne State University Office of Institutional Research. The total number of applications was 5,747 in fall 2004 and was 6,331 in fall 2005.

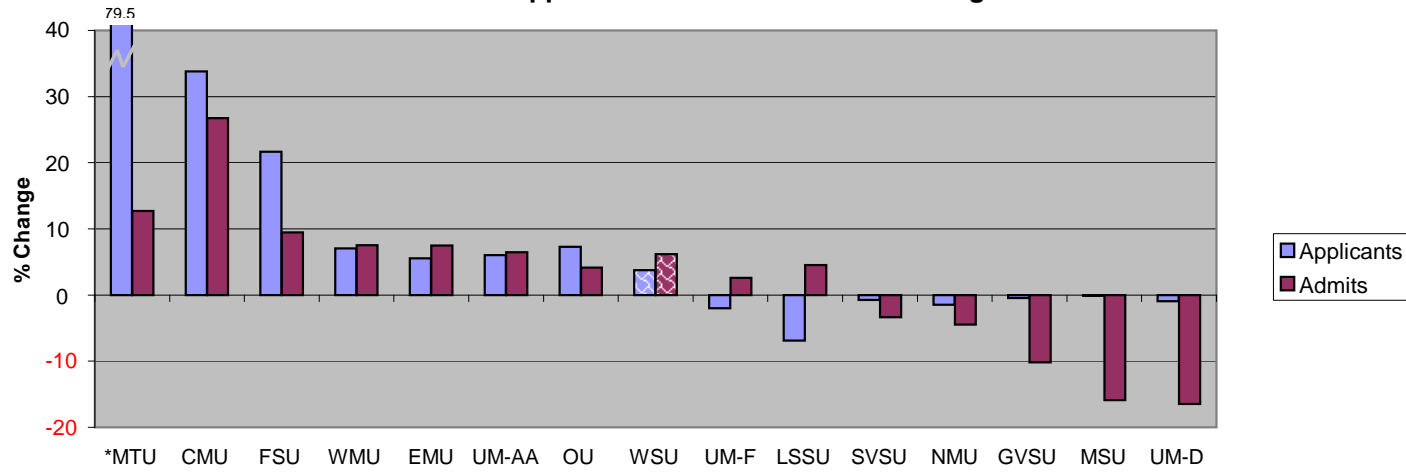
Table 2 continued

**New Transfer Undergraduate Students Applications, Admittances, and Enrollments
Fall 2004 and Fall 2005**

Institution	Admits/Apps Rate			Enrolled/Admits Rate			Applicants % of Total		
	2004	2005	Change	2004	2005	Change	2004	2005	Change
Central Michigan University	72.8	69.0	-3.8	73.6	58.4	-15.2	6.9	8.5	1.7
Eastern Michigan University	75.3	76.7	1.4	71.4	67.0	-4.4	10.4	10.3	-0.2
Ferris State University	59.1	53.2	-5.9	63.8	61.8	-1.9	11.5	13.1	1.5
Grand Valley State University	92.5	83.5	-9.0	67.4	67.1	-0.4	8.5	7.8	-0.6
Lake Superior State University	73.8	82.9	9.1	57.2	52.1	-5.1	2.0	1.7	-0.3
Michigan State University	56.8	47.8	-9.0	70.0	74.8	4.8	14.1	13.1	-1.0
Michigan Technological University	91.4	57.4	-34.0	66.2	63.2	-3.0	1.1	1.8	0.7
Northern Michigan University	68.8	66.7	-2.1	67.9	68.4	0.5	3.8	3.5	-0.3
Oakland University	75.6	73.3	-2.2	72.6	73.2	0.7	7.8	7.8	0.0
Saginaw Valley State University	89.5	87.1	-2.4	63.4	66.4	2.9	3.7	3.4	-0.3
University of Michigan - Ann Arbor	44.5	44.7	0.2	68.3	61.8	-6.5	9.1	9.0	-0.1
University of Michigan - Dearborn	87.8	74.0	-13.7	49.0	60.5	11.5	5.0	4.6	-0.4
University of Michigan - Flint	80.7	84.5	3.8	65.4	62.6	-2.8	4.5	4.1	-0.4
Wayne State University	91.5	93.6	2.1	80.7	81.5	0.8	11.6	11.2	-0.4
Western Michigan University	79.0	79.4	0.4	69.5	62.0	-7.5	10.3	10.2	0.0
Total	72.5	68.4	-4.1	69.0	68.0	-1.1	100.0	100.0	

Sources: Common Data Sets for 2004-05 and 2005-06

Chart 6
Transfer Applicants & Admits - Percent Change



*MTU value of 79.5 is truncated to facilitate viewing of the remaining universities. Actual values are 327 applicants in 2004 and 587 applicants in 2005 (difference of 260 applicants). High percentage change is not reflective of the absolute change.

Chart 7
Transfer Enrollment - Percent Change

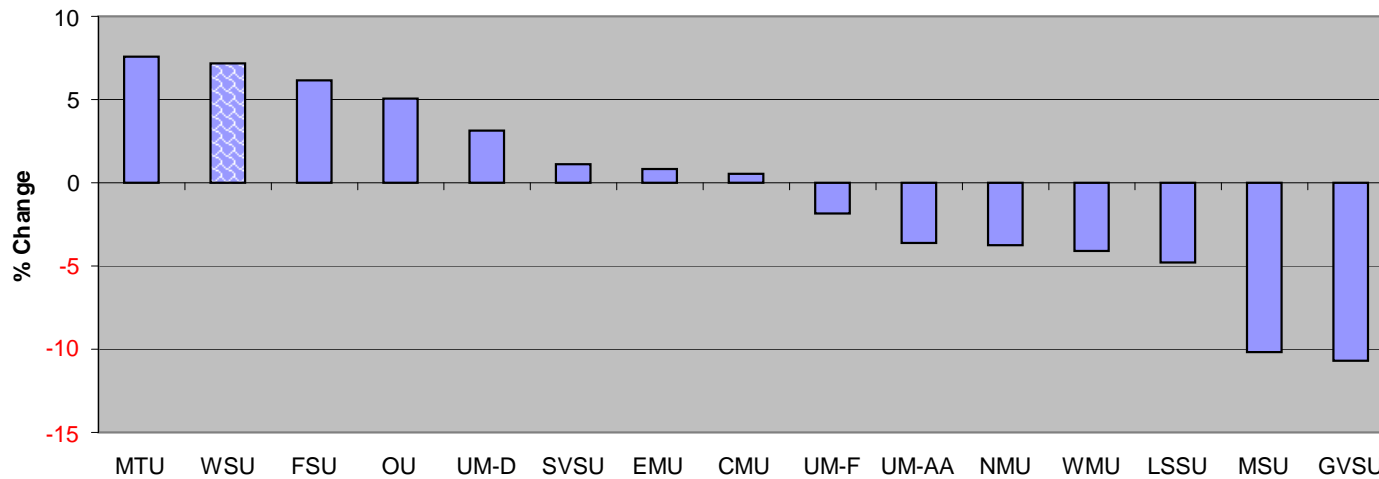


Chart 8
Transfer Students - Percent Change in Yield Ratio
Applicants to Admits

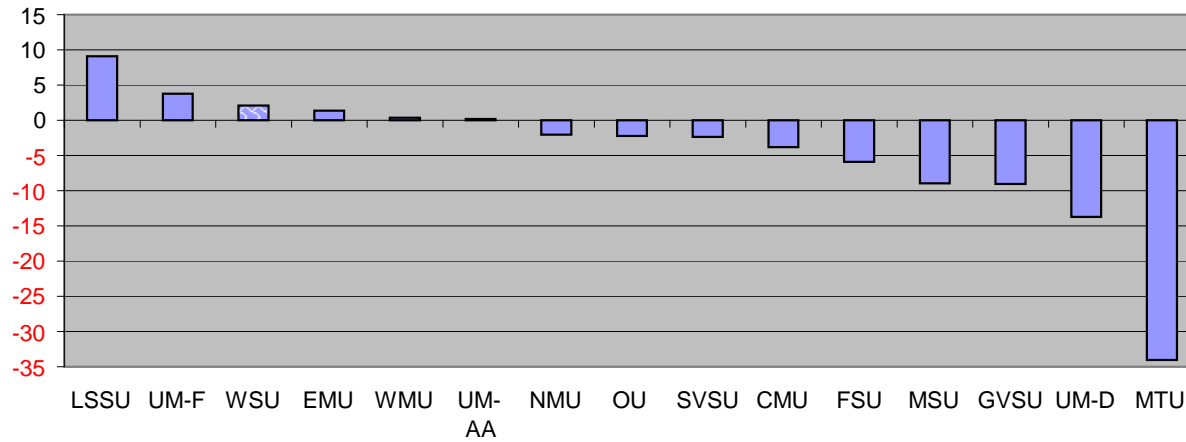


Chart 9
Transfer Students - Percent Change in Yield Ratio
Enrollments to Admits

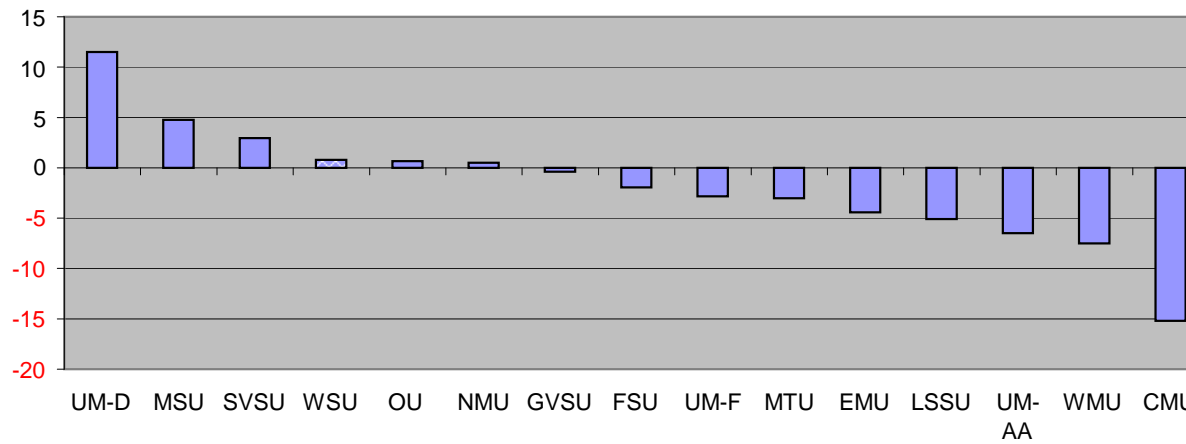


Table 3**Total Student Headcount
Fall 2004 and Fall 2005**

Institution	2004	2005	Change	% Change
Central Michigan University	24,550	24,735	185	0.75
Eastern Michigan University	23,836	23,467	-369	-1.55
Ferris State University	11,803	12,547	744	6.30
Grand Valley State University	22,063	22,565	502	2.28
Lake Superior State University	2,888	2,907	19	0.66
Michigan State University	44,836	45,166	330	0.74
Michigan Technological University	6,531	6,506	-25	-0.38
Northern Michigan University	9,331	9,500	169	1.81
Oakland University	16,902	17,339	437	2.59
Saginaw Valley State University	9,448	9,569	121	1.28
University Of Michigan - Ann Arbor	39,166	39,686	520	1.33
University Of Michigan - Dearborn	8,631	8,613	-18	-0.21
University Of Michigan - Flint	6,188	6,422	234	3.78
Wayne State University	33,314	33,137	-177	-0.53
Western Michigan University	27,829	26,231	-1,598	-5.74
Total	287,316	288,390	1,074	0.37

% of Total		
2004	2005	Change
8.5	8.6	0.0
8.3	8.1	-0.2
4.1	4.4	0.2
7.7	7.8	0.1
1.0	1.0	0.0
15.6	15.7	0.1
2.3	2.3	0.0
3.2	3.3	0.0
5.9	6.0	0.1
3.3	3.3	0.0
13.6	13.8	0.1
3.0	3.0	0.0
2.2	2.2	0.1
11.6	11.5	-0.1
9.7	9.1	-0.6
100.0	100.0	

Source: Presidents Council Enrollment Report, Table 1, Fall 2005

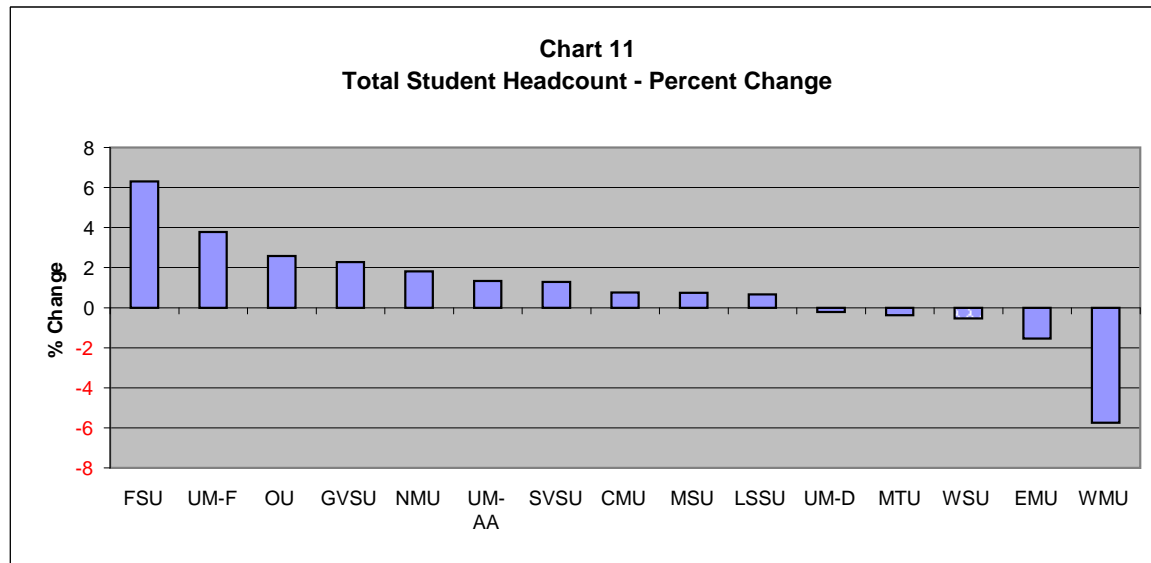
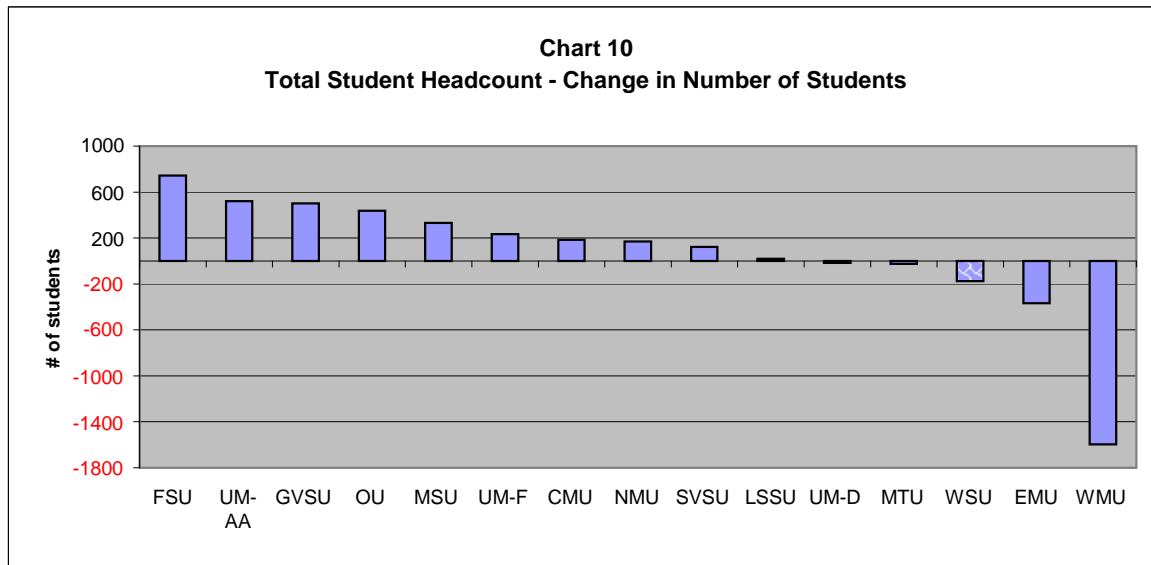


Table 4**First-time Freshmen Headcount
Fall 2004 and Fall 2005**

Institution	2004	2005	Change	% Change
Central Michigan University	3,762	3,743	-19	-0.5
Eastern Michigan University	2,374	2,369	-5	-0.2
Ferris State University	2,071	2,417	346	16.7
Grand Valley State University	3,408	3,472	64	1.9
Lake Superior State University	559	496	-63	-11.3
Michigan State University	7,412	7,485	73	1.0
Michigan Technological University	1,227	1,327	100	8.1
Northern Michigan University	1,388	1,372	-16	-1.2
Oakland University	2,053	2,213	160	7.8
Saginaw Valley State University	1,241	1,263	22	1.8
University Of Michigan - Ann Arbor	6,040	6,115	75	1.2
University Of Michigan - Dearborn	696	840	144	20.7
University Of Michigan - Flint	553	579	26	4.7
Wayne State University	3,120	2,879	-241	-7.7
Western Michigan University	3,833	3,837	4	0.1
Total	39,737	40,407	670	1.7

% of Total		
2004	2005	Change
9.5	9.3	-0.2
6.0	5.9	-0.1
5.2	6.0	0.8
8.6	8.6	0.0
1.4	1.2	-0.2
18.7	18.5	-0.1
3.1	3.3	0.2
3.5	3.4	-0.1
5.2	5.5	0.3
3.1	3.1	0.0
15.2	15.1	-0.1
1.8	2.1	0.3
1.4	1.4	0.0
7.9	7.1	-0.7
9.6	9.5	-0.2
100.0	100.0	

Source: Presidents Council Enrollment Report, Table 3 , Fall 2005

Chart 12
FTIAC Headcount - Change in Number of Students

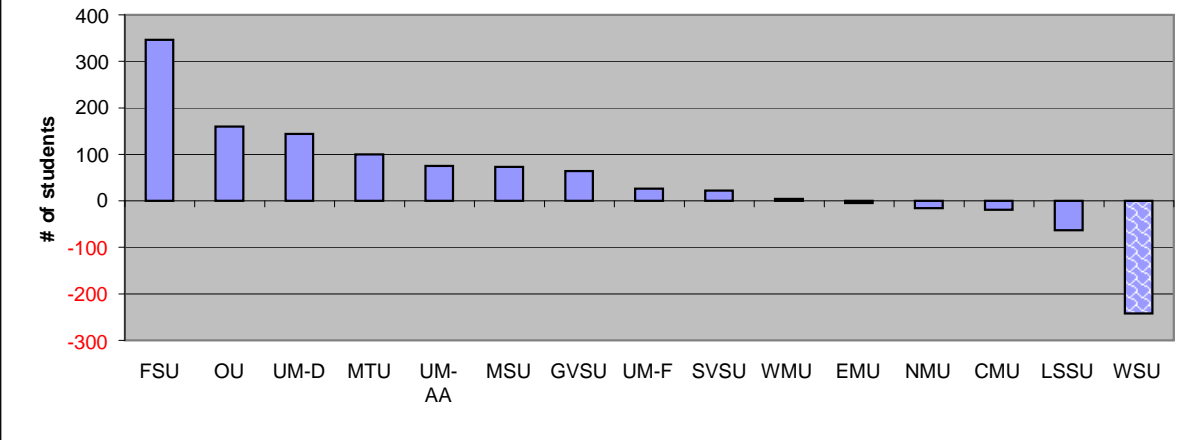


Chart 13
FTIAC Headcount - Percent Change

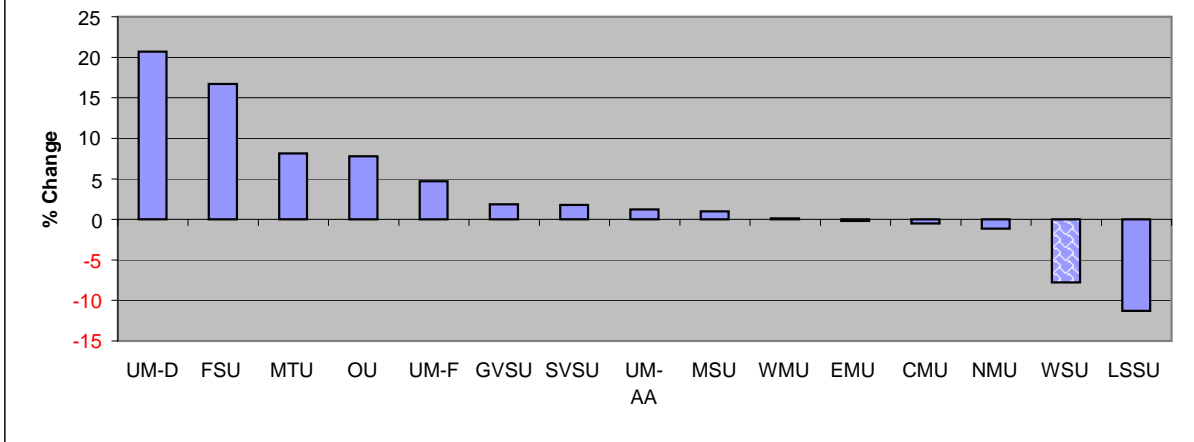


Table 5

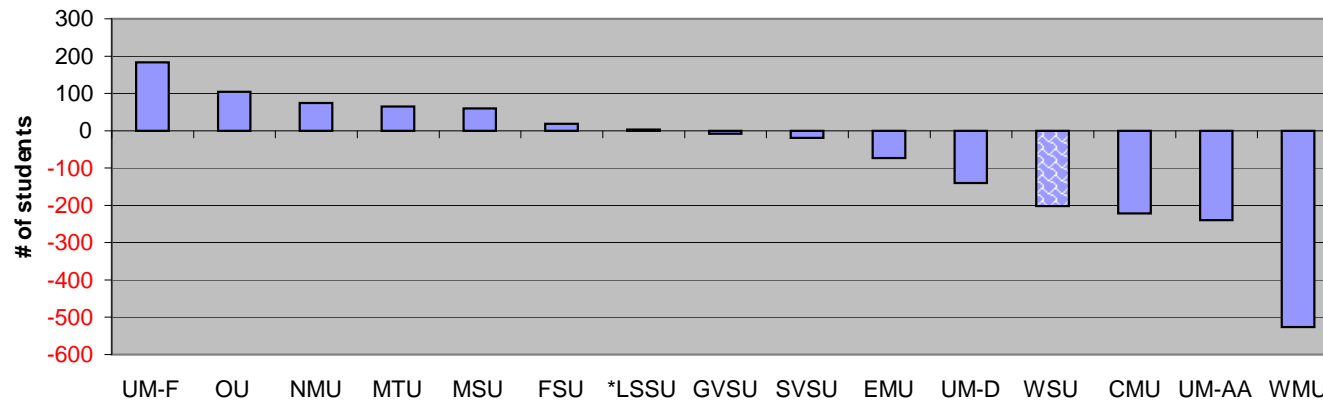
**Graduate Student Headcount
Fall 2005**

Institution	2004	2005	Change	% Change
Central Michigan University	4,958	4,736	-222	-4.5
Eastern Michigan University	4,871	4,798	-73	-1.5
Ferris State University	1,095	1,114	19	1.7
Grand Valley State University	3,670	3,662	-8	-0.2
Lake Superior State University	0	3	3	0.0
Michigan State University	9,428	9,488	60	0.6
Michigan Technological University	831	896	65	7.8
Northern Michigan University	728	802	74	10.2
Oakland University	3,787	3,891	104	2.7
Saginaw Valley State University	1,659	1,640	-19	-1.1
University Of Michigan - Ann Arbor	14,459	14,219	-240	-1.7
University Of Michigan - Dearborn	2,182	2,042	-140	-6.4
University Of Michigan - Flint	568	751	183	32.2
Wayne State University	12,602	12,400	-202	-1.6
Western Michigan University	5,327	4,801	-526	-9.9
Total	66,165	65,243	-922	-1.4

% of Total		
2004	2005	Change
7.5	7.3	-0.2
7.4	7.4	0.0
1.7	1.7	0.1
5.5	5.6	0.1
0.0	0.0	0.0
14.2	14.5	0.3
1.3	1.4	0.1
1.1	1.2	0.1
5.7	6.0	0.2
2.5	2.5	0.0
21.9	21.8	-0.1
3.3	3.1	-0.2
0.9	1.2	0.3
19.0	19.0	0.0
8.1	7.4	-0.7
100.0	100.0	

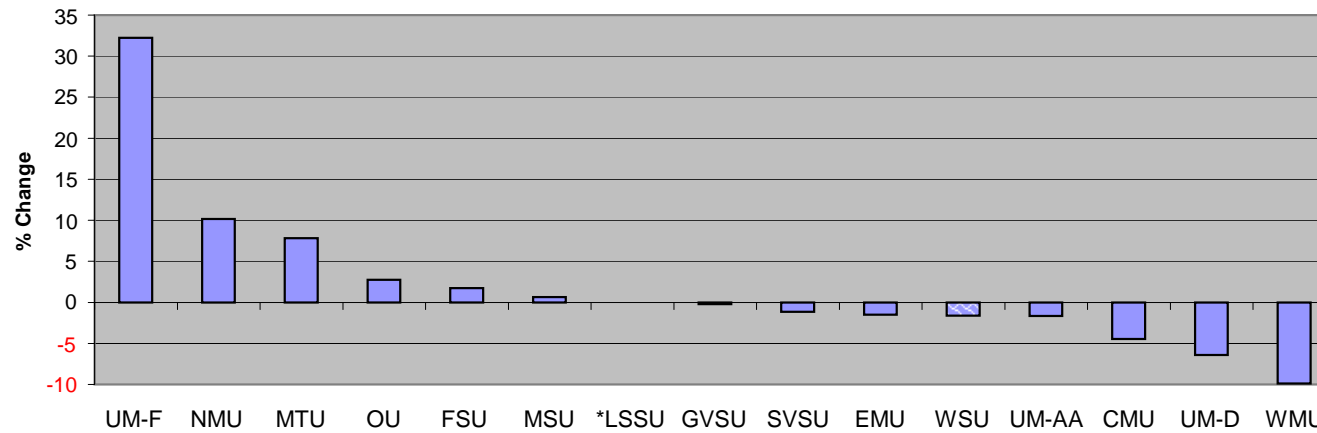
Source: Presidents Council Enrollment Report, Table 4, Fall 2005

Chart 14
Graduate Headcount - Change in Number of Students



*LSSU previously did not have a graduate program, however, this year it has an enrollment of 3 graduate students.

Chart 15
Graduate Headcount - Percent Change



*Percentage increase is not calculated for LSSU, which previously did not have a graduate program.

Table 6

**Enrollment by Level
Fall 2004 and Fall 2005**

Institution	Lower Division			
	2004	2005	Change	% Change
Central Michigan University	9,304	9,391	87	0.9
Eastern Michigan University	7,644	7,960	316	4.1
Ferris State University	5,513	5,737	224	4.1
Grand Valley State University	8,374	8,350	-24	-0.3
Lake Superior State University	1,445	1,473	28	1.9
Michigan State University	17,281	17,471	190	1.1
Michigan Technological University	3,071	2,979	-92	-3.0
Northern Michigan University	4,731	4,844	113	2.4
Oakland University	5,703	5,885	182	3.2
Saginaw Valley State University	3,750	3,809	59	1.6
University Of Michigan - Ann Arbor	11,544	12,228	684	5.9
University Of Michigan - Dearborn	2,739	2,830	91	3.3
University Of Michigan - Flint	2,071	2,236	165	8.0
Wayne State University	9,646	9,648	2	0.0
Western Michigan University	10,202	9,441	-761	-7.5
Total	103,018	104,282	1,264	1.2

Institution	Upper Division			
	2004	2005	Change	% Change
Central Michigan University	10,613	10,608	-5	0.0
Eastern Michigan University	11,368	10,709	-659	-5.8
Ferris State University	5,195	5,696	501	9.6
Grand Valley State University	10,019	10,553	534	5.3
Lake Superior State University	1,445	1,431	-14	-1.0
Michigan State University	18,127	18,207	80	0.4
Michigan Technological University	2,638	2,631	-7	-0.3
Northern Michigan University	3,872	3,854	-18	-0.5
Oakland University	7,412	7,563	151	2.0
Saginaw Valley State University	4,039	4,120	81	2.0
University Of Michigan - Ann Arbor	13,284	13,239	-45	-0.3
University Of Michigan - Dearborn	3,710	3,741	31	0.8
University Of Michigan - Flint	3,549	3,435	-114	-3.2
Wayne State University	11,066	11,089	23	0.2
Western Michigan University	12,300	11,989	-311	-2.5
Total	118,637	118,865	228	0.2

Institution	Total Undergraduate			
	2004	2005	Change	% Change
Central Michigan University	19,917	19,999	82	0.4
Eastern Michigan University	19,012	18,669	-343	-1.8
Ferris State University	10,708	11,433	725	6.8
Grand Valley State University	18,393	18,903	510	2.8
Lake Superior State University	2,890	2,904	14	0.0
Michigan State University	35,408	35,678	270	0.8
Michigan Technological University	5,709	5,610	-99	-1.7
Northern Michigan University	8,603	8,698	95	1.1
Oakland University	13,115	13,448	333	2.5
Saginaw Valley State University	7,789	7,929	140	1.8
University Of Michigan - Ann Arbor	24,828	25,467	639	2.6
University Of Michigan - Dearborn	6,449	6,571	122	1.9
University Of Michigan - Flint	5,620	5,671	51	0.9
Wayne State University	20,712	20,737	25	0.1
Western Michigan University	22,502	21,430	-1,072	-4.8
Total	221,655	223,147	1,492	0.7

Institution	Masters			
	2004	2005	Change	% Change
Central Michigan University	4,653	4,404	-249	-5.4
Eastern Michigan University	4,702	4,594	-108	-2.3
Ferris State University	508	494	-14	-2.8
Grand Valley State University	3,670	3,662	-8	-0.2
Lake Superior State University	0	3	3	0.0
Michigan State University	5,218	5,146	-72	-1.4
Michigan Technological University	539	578	39	7.2
Northern Michigan University	708	786	78	11.0
Oakland University	3,299	3,317	18	0.5
Saginaw Valley State University	1,586	1,582	-4	-0.3
University Of Michigan - Ann Arbor	8,013	7,728	-285	-3.6
University Of Michigan - Dearborn	2,182	2,042	-140	-6.4
University Of Michigan - Flint	568	751	183	32.2
Wayne State University	8,146	7,798	-348	-4.3
Western Michigan University	4,601	4,040	-561	-12.2
Total	48,393	46,925	-1,468	-3.0

Table 6 continued

**Enrollment by Level
Fall 2004 and Fall 2005**

Institution	Doctoral			
	2004	2005	Change	% Change
Central Michigan University	305	332	27	8.9
Eastern Michigan University	169	204	35	20.7
Ferris State University	0	0	0	0.0
Grand Valley State University	0	0	0	0.0
Lake Superior State University	0	0	0	0.0
Michigan State University	2,822	2,850	28	1.0
Michigan Technological University	292	318	26	8.9
Northern Michigan University	20	16	-4	-20.0
Oakland University	488	574	86	17.6
Saginaw Valley State University	73	58	-15	-20.5
University Of Michigan - Ann Arbor	2,957	2,934	-23	-0.8
University Of Michigan - Dearborn	0	0	0	0.0
University Of Michigan - Flint	0	0	0	0.0
Wayne State University	1,483	1,550	67	4.5
Western Michigan University	726	761	35	4.8
Total	9,335	9,597	262	2.8

Institution	Professional			
	2004	2005	Change	% Change
Central Michigan University	0	0	0	0.0
Eastern Michigan University	0	0	0	0.0
Ferris State University	587	620	33	5.6
Grand Valley State University	0	0	0	0.0
Lake Superior State University	0	0	0	0.0
Michigan State University	1,388	1,492	104	7.5
Michigan Technological University	0	0	0	0.0
Northern Michigan University	0	0	0	0.0
Oakland University	0	0	0	0.0
Saginaw Valley State University	0	0	0	0.0
University Of Michigan - Ann Arbor	3,486	3,557	71	2.0
University Of Michigan - Dearborn	0	0	0	0.0
University Of Michigan - Flint	0	0	0	0.0
Wayne State University	2,973	3,052	79	2.7
Western Michigan University	0	0	0	0.0
Total	8,434	8,721	287	0.0

Percent of Total

Institution	Lower Division % of Total		
	2004	2005	Change
Central Michigan University	9.0	9.0	0.0
Eastern Michigan University	7.4	7.6	0.2
Ferris State University	5.4	5.5	0.1
Grand Valley State University	8.1	8.0	-0.1
Lake Superior State University	1.4	1.4	0.0
Michigan State University	16.8	16.8	0.0
Michigan Technological University	3.0	2.9	-0.1
Northern Michigan University	4.6	4.6	0.1
Oakland University	5.5	5.6	0.1
Saginaw Valley State University	3.6	3.7	0.0
University Of Michigan - Ann Arbor	11.2	11.7	0.5
University Of Michigan - Dearborn	2.7	2.7	0.1
University Of Michigan - Flint	2.0	2.1	0.1
Wayne State University	9.4	9.3	-0.1
Western Michigan University	9.9	9.1	-0.8
Total	100.0	100.0	

Institution	Upper Division % of Total		
	2004	2005	Change
Central Michigan University	8.9	8.9	0.0
Eastern Michigan University	9.6	9.0	-0.6
Ferris State University	4.4	4.8	0.4
Grand Valley State University	8.4	8.9	0.4
Lake Superior State University	1.2	1.2	0.0
Michigan State University	15.3	15.3	0.0
Michigan Technological University	2.2	2.2	0.0
Northern Michigan University	3.3	3.2	0.0
Oakland University	6.2	6.4	0.1
Saginaw Valley State University	3.4	3.5	0.1
University Of Michigan - Ann Arbor	11.2	11.1	-0.1
University Of Michigan - Dearborn	3.1	3.1	0.0
University Of Michigan - Flint	3.0	2.9	-0.1
Wayne State University	9.3	9.3	0.0
Western Michigan University	10.4	10.1	-0.3
Total	100.0	100.0	

Table 6 continued

**Percent of Total
Fall 2004 and Fall 2005**

Institution	Total Undergraduate % of Total		
	2004	2005	Change
Central Michigan University	9.0	9.0	0.0
Eastern Michigan University	8.6	8.4	-0.2
Ferris State University	4.8	5.1	0.3
Grand Valley State University	8.3	8.5	0.2
Lake Superior State University	1.3	1.3	0.0
Michigan State University	16.0	16.0	0.0
Michigan Technological University	2.6	2.5	-0.1
Northern Michigan University	3.9	3.9	0.0
Oakland University	5.9	6.0	0.1
Saginaw Valley State University	3.5	3.6	0.0
University Of Michigan - Ann Arbor	11.2	11.4	0.2
University Of Michigan - Dearborn	2.9	2.9	0.0
University Of Michigan - Flint	2.5	2.5	0.0
Wayne State University	9.3	9.3	-0.1
Western Michigan University	10.2	9.6	-0.5
Total	100.0	100.0	

Institution	Doctoral % of Total		
	2004	2005	Change
Central Michigan University	3.3	3.5	0.2
Eastern Michigan University	1.8	2.1	0.3
Ferris State University	0.0	0.0	0.0
Grand Valley State University	0.0	0.0	0.0
Lake Superior State University	0.0	0.0	0.0
Michigan State University	30.2	29.7	-0.5
Michigan Technological University	3.1	3.3	0.2
Northern Michigan University	0.2	0.2	0.0
Oakland University	5.2	6.0	0.8
Saginaw Valley State University	0.8	0.6	-0.2
University Of Michigan - Ann Arbor	31.7	30.6	-1.1
University Of Michigan - Dearborn	0.0	0.0	0.0
University Of Michigan - Flint	0.0	0.0	0.0
Wayne State University	15.9	16.2	0.3
Western Michigan University	7.8	7.9	0.2
Total	100.0	100.0	

Institution	Masters % of Total		
	2004	2005	Change
Central Michigan University	9.6	9.4	-0.2
Eastern Michigan University	9.7	9.8	0.1
Ferris State University	1.0	1.1	0.0
Grand Valley State University	7.6	7.8	0.2
Lake Superior State University	0.0	0.0	0.0
Michigan State University	10.8	11.0	0.2
Michigan Technological University	1.1	1.2	0.1
Northern Michigan University	1.5	1.7	0.2
Oakland University	6.8	7.1	0.3
Saginaw Valley State University	3.3	3.4	0.1
University Of Michigan - Ann Arbor	16.6	16.5	-0.1
University Of Michigan - Dearborn	4.5	4.4	-0.2
University Of Michigan - Flint	1.2	1.6	0.4
Wayne State University	16.8	16.6	-0.2
Western Michigan University	9.5	8.6	-0.9
Total	100.0	100.0	

Institution	Professional % of Total		
	2004	2005	Change
Central Michigan University	0.0	0.0	0.0
Eastern Michigan University	0.0	0.0	0.0
Ferris State University	7.0	7.1	0.1
Grand Valley State University	0.0	0.0	0.0
Lake Superior State University	0.0	0.0	0.0
Michigan State University	16.5	17.1	0.7
Michigan Technological University	0.0	0.0	0.0
Northern Michigan University	0.0	0.0	0.0
Oakland University	0.0	0.0	0.0
Saginaw Valley State University	0.0	0.0	0.0
University Of Michigan - Ann Arbor	41.3	40.8	-0.5
University Of Michigan - Dearborn	0.0	0.0	0.0
University Of Michigan - Flint	0.0	0.0	0.0
Wayne State University	35.3	35.0	-0.3
Western Michigan University	0.0	0.0	0.0
Total	100.0	100.0	

Source: Presidents Council Enrollment Report, Table 5, Fall 2005

Chart 16
Undergraduate Enrollment - Change in Number of Students

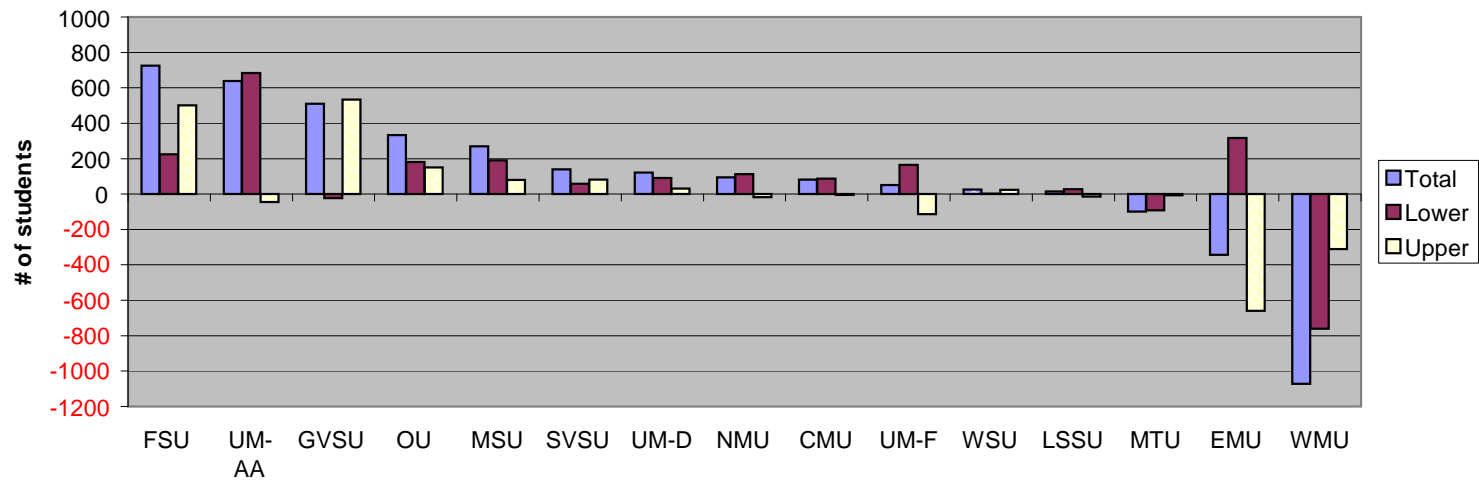


Chart 17
Undergraduate Enrollment - Percent Change

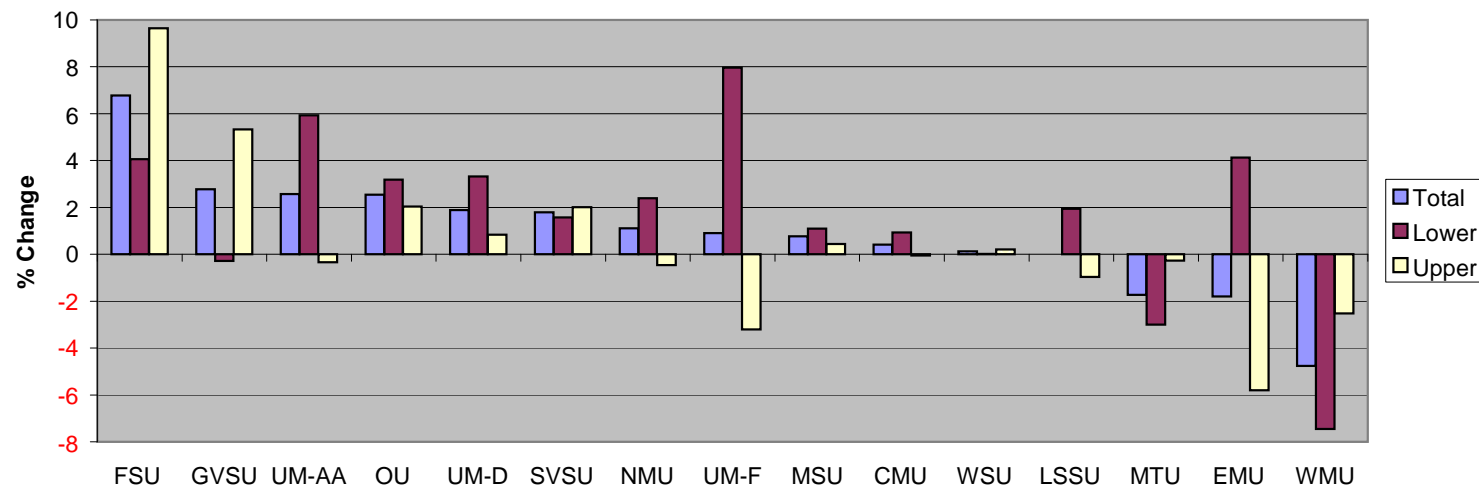
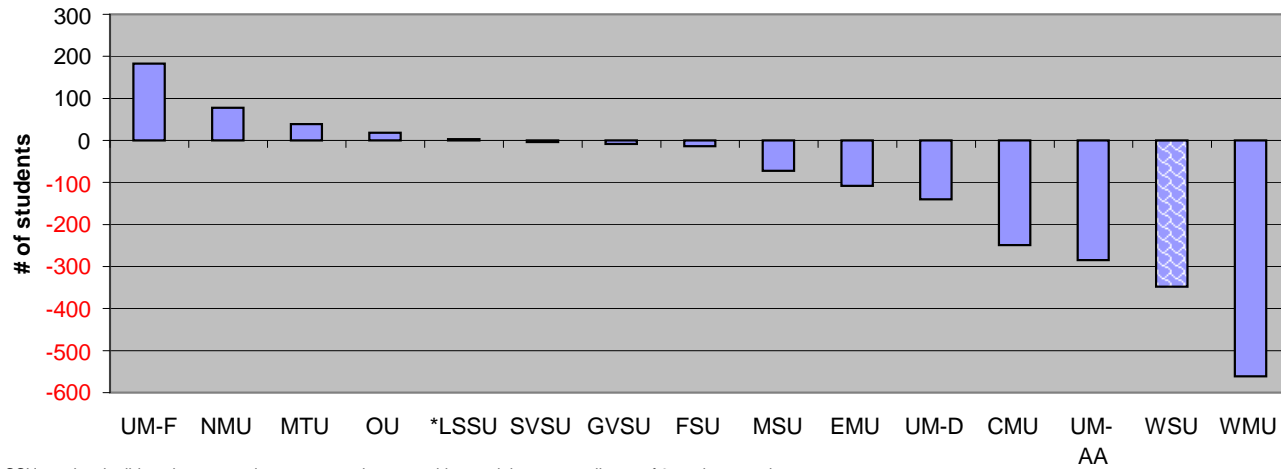
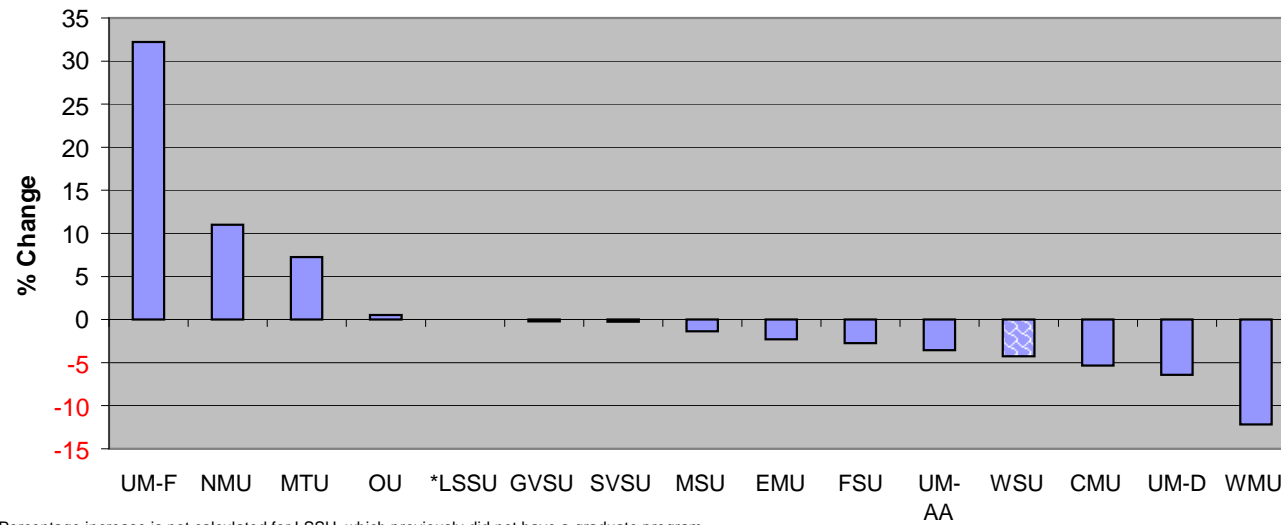


Chart 18
Masters Enrollment - Change in Number of Students



*LSSU previously did not have a graduate program, however, this year it has an enrollment of 3 graduate students.

Chart 19
Masters Enrollment - Percent Change



*Percentage increase is not calculated for LSSU, which previously did not have a graduate program.

Chart 20
Doctoral Enrollment - Change in Number of Students

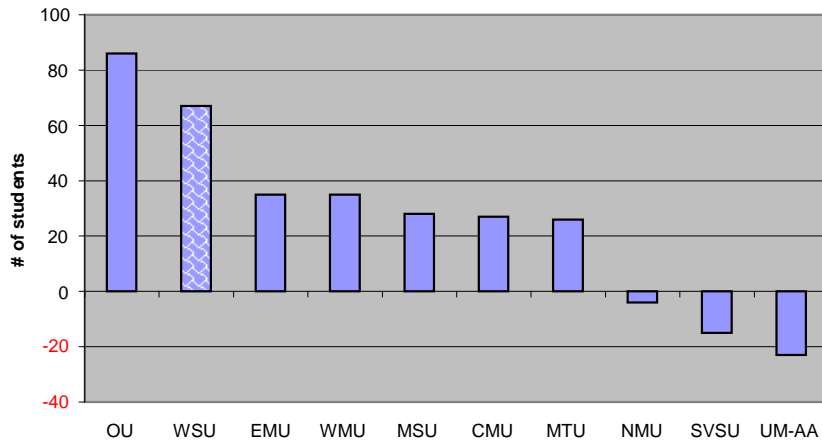


Chart 22
Professional Enrollment - Change in Number of Students

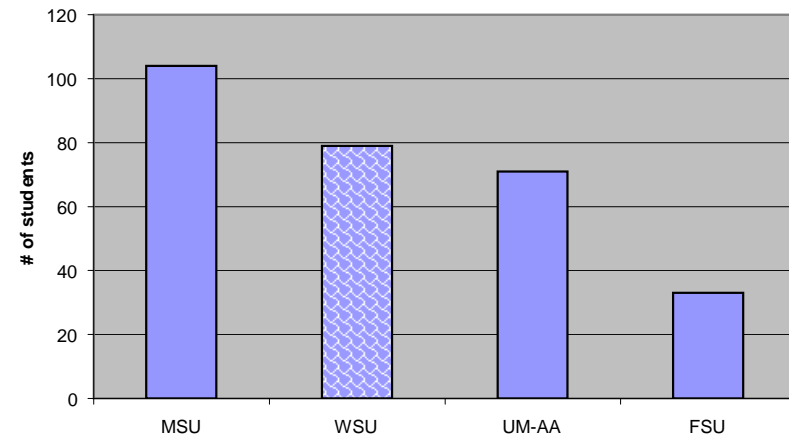


Chart 21
Doctoral Enrollment - Percent Change

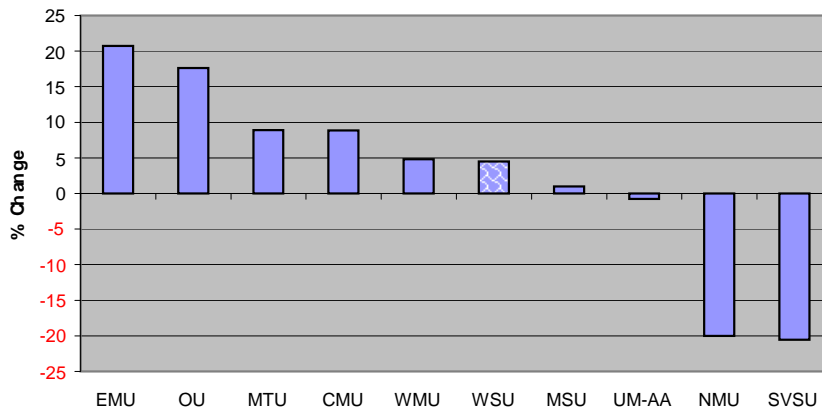


Chart 23
Professional Enrollment - Percent Change

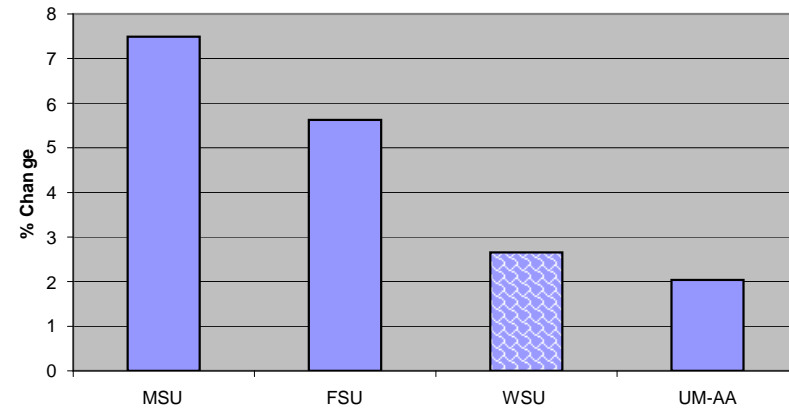


Table 7

**Fiscal Year Equivalent Students
FY04 and FY05**

Institution	2003-04	2004-05	Change	% Change
Central Michigan University	21,447	21,431	-16	-0.1
Eastern Michigan University	19,579	18,947	-632	-3.2
Ferris State University	10,340	10,548	208	2.0
Grand Valley State University	18,515	19,400	885	4.8
Lake Superior State University	2,803	2,591	-212	-7.6
Michigan State University	41,528	41,836	308	0.7
Michigan Technological University	6,046	5,932	-114	-1.9
Northern Michigan University	8,304	8,424	120	1.4
Oakland University	13,652	13,833	181	1.3
Saginaw Valley State University	7,407	7,649	242	3.3
University Of Michigan - Ann Arbor	38,872	39,311	439	1.1
University Of Michigan - Dearborn	6,462	6,227	-235	-3.6
University Of Michigan - Flint	4,892	4,941	49	1.0
Wayne State University	24,729	25,173	444	1.8
Western Michigan University	25,039	24,006	-1,033	-4.1
Total	249,615	250,249	634	0.3

% of Total		
2004	2005	Change
8.6	8.6	0.0
7.8	7.6	-0.3
4.1	4.2	0.1
7.4	7.8	0.3
1.1	1.0	-0.1
16.6	16.7	0.1
2.4	2.4	-0.1
3.3	3.4	0.0
5.5	5.5	0.1
3.0	3.1	0.1
15.6	15.7	0.1
2.6	2.5	-0.1
2.0	2.0	0.0
9.9	10.1	0.2
10.0	9.6	-0.4
100.0	100.0	

Source: Presidents Council Enrollment Report, Table 2, Fall 2005

Chart 24
Fiscal Year Equivalent Students - Change in Number of FYES

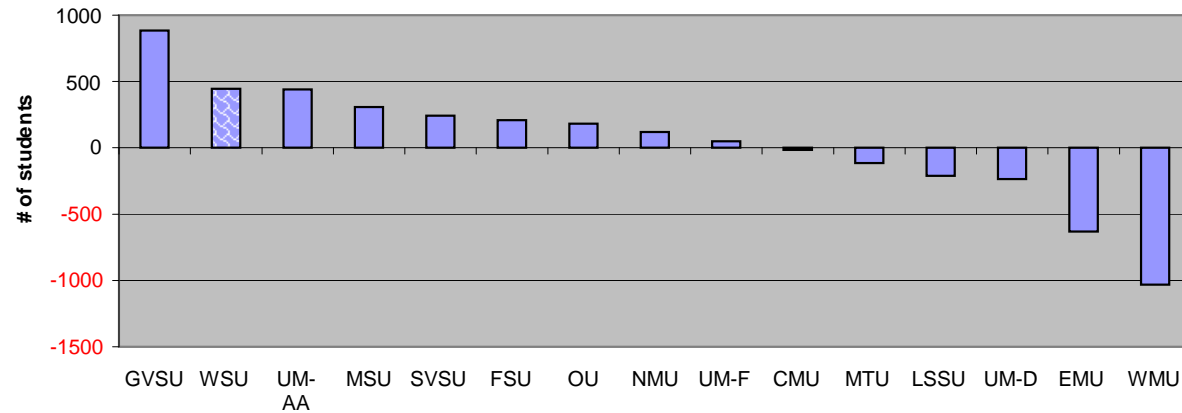


Chart 25
Fiscal Year Equivalent Students - Percent Change

